



# SureCoat<sup>TM</sup>

## Pre-Coated Cell Culture Plates

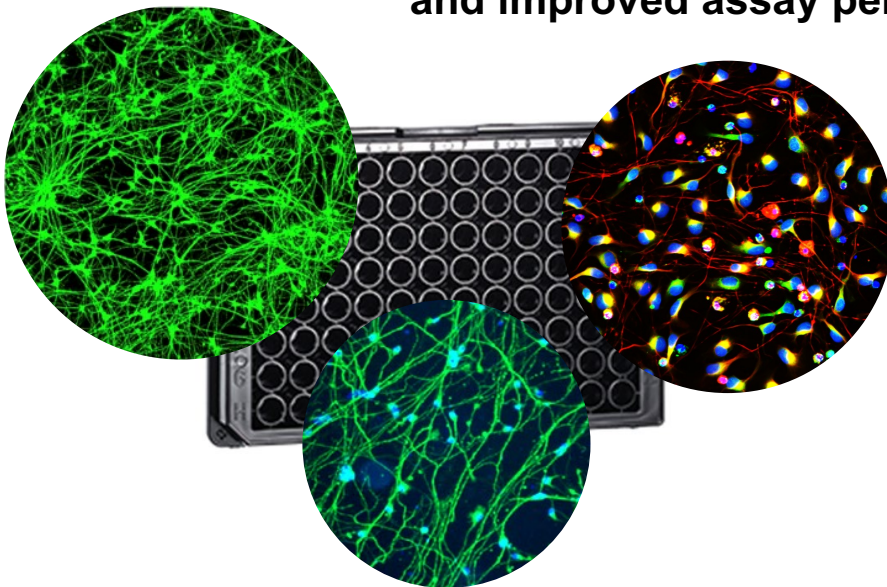
Redefining Drug Discovery

### Product Description

Stem Pharm's **SureCoat** Plates are ready-to-use culture plates pre-coated with Stem Pharm's proprietary **SureCoat** synthetic substrate optimized for cell adhesion. SureCoat Plates are commercial-grade standard imaging plates and are ready for cell plating immediately out of their package.

The SureCoat synthetic substrate is composed of functionalized multi-armed polyethylene glycol monomers that are cross-linked and incorporate bioactive peptides to create superior adhesion and biomechanical properties. The substrate coating is thin (~8  $\mu\text{m}$ ) and has an elastic modulus of 80 – 100 kPa.

**SureCoat Plates are designed for superior cell adhesion, accelerated cell maturation, enhanced cellular phenotypes, and improved assay performance.**



### Key Features

- ✓ Fully defined chemistry optimized for cell adhesion
- ✓ Ready-to-use out of the package
- ✓ Shelf stable at room temperature for at least 9 months
- ✓ Optically clear and ideal for imaging applications
- ✓ Designed for iPSC-derived neural cells, and other cell types including iPSCs, MSCs and endothelial cells

### Applications for iPSC-Derived Neural Cell Culture

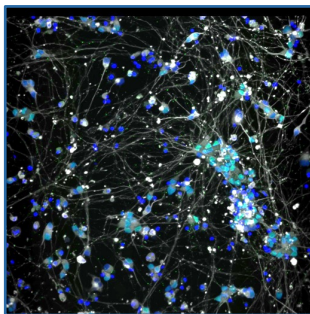
- Glutamatergic neurons
- GABAergic neurons
- Induced excitatory neurons
- Motor neurons
- Astrocytes
- Microglia

### SureCoat Plate Formats

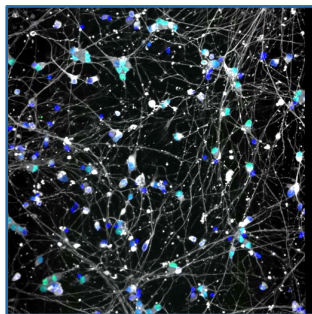
AVAILABLE NOW - 96 Well Plates  
(Cat # SP-202)

Coming Soon - 384 Well Plates  
(Cat # SP-204)

**SureCoat** Plates are designed for superior cell adhesion in long-term cultures

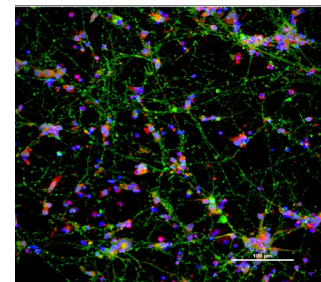
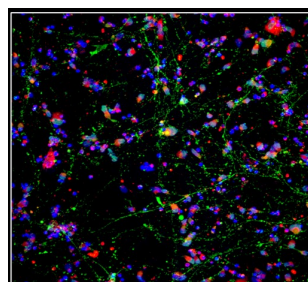


Motor neurons plated on PDL clump and peel due to poor adhesion.



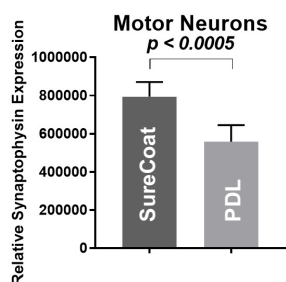
Motor neurons plated on **SureCoat** attach evenly to the substrate with no evidence of peeling.

**SureCoat** Plates improve assay performance

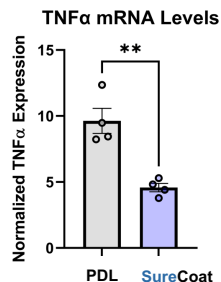


Glutamatergic neurons cultured for 14 days on **SureCoat** (right) demonstrate enhanced synaptophysin expression compared to those cultured on PDL (left).

**SureCoat** Plates accelerate cell maturation and enhance cellular phenotypes



**SureCoat** enhances synaptophysin expression at earlier timepoints.



Microglia cultured on **SureCoat** demonstrate a less basal inflammatory phenotype vs. PDL

**SureCoat** Plates save you time

Eliminates the need for tedious and error prone plate preparation

**SureCoat** Plates save you money

Reduces risk of failure with expensive cell cultures and assays due to poorly adhered cells and variability inherent with current coatings

**Ordering Information**

Product Name	Catalog #	Price
<b>SureCoat</b> Pre-Coated 96 Well Cell Culture Plate	SP-202	Contact us for Early Access
<b>SureCoat</b> Pre-Coated 384 Well Cell Culture Plate	SP-204	Coming Soon

**Contact us to place an order or request more information.**

**Stem Pharm, Inc.**  
**5520 Nobel Drive**  
**Madison, WI 53711**

**Contact Stem Pharm**  
**info@stempharm.com**  
**www.stempharm.com**